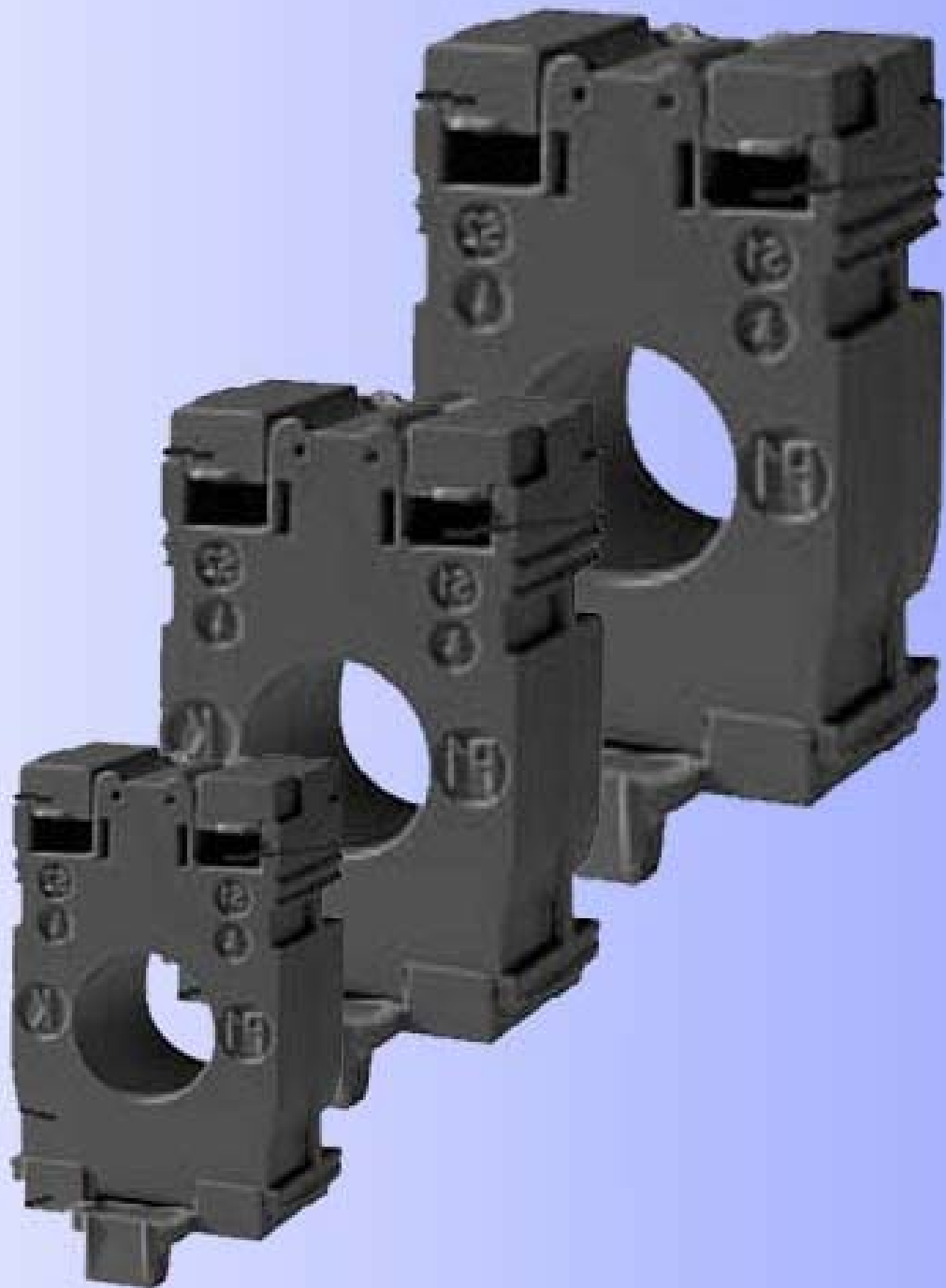
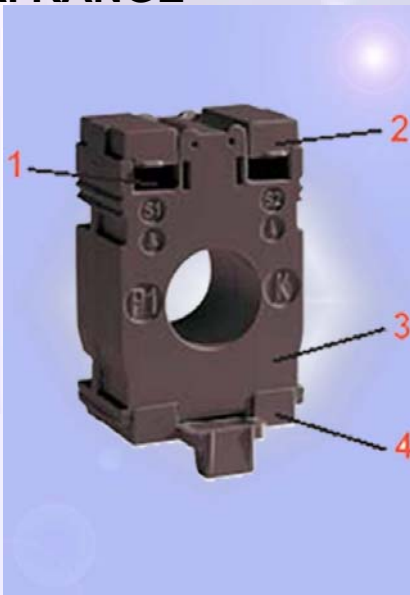


Current transformers



The current transformer deliver to the secondary a current proportional to the primary current.

TAI RANGE



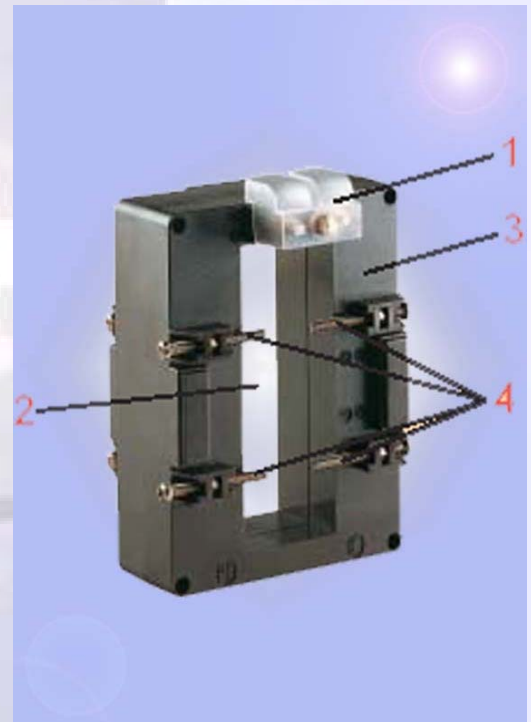
The TAI range was developed to satisfy the applications from 40 up to 1250A. DIN rail mounting or fixable in the cabinet. This range of product is specially design for low section bus bar and cables.

1. Double connection, screw and faston
2. Secondary terminals IP20 hiding terminals plombables in accessory
3. Self-extinguishing thermoplastic material case
4. DIN RAIL fixing

TAS RANGE

The TAS range was developed to satisfy the applications from 200 up to 5000A. This range of product is specially designed large busbar insulated or not.

1. Connection for different type of terminals or closed, hiding terminals plombables in accessory
2. Broad opening for naked or insulated bars
3. Self-extinguishing thermoplastic material case
4. Bus bars fixings (8 points) ensuring a good positioning.



MAIN CHARACTERISTICS

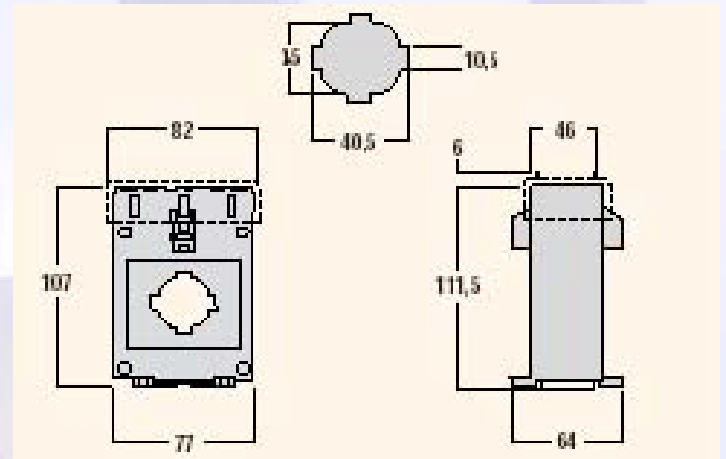
- ✓ **Secondary current 5A or 1A**
- ✓ **Frequency:** 50÷60Hz
- ✓ **Insulation reference voltage:** 0,72kV
 - test voltage 3kV ,1 minute' at 50Hz
- ✓ **Rated dynamic current (Idyn):** 2,5 lth
- ✓ **Working time with secondary winding open 1 minute (CEI 38-1, IEC 185)**
- ✓ **Connectors marking:**
 - primary P1 - P2 (K - L)
 - secondary s1 - s2 (k - l)
- ✓ **Self extinguishing thermoplastic material , classification VO according to UL 94**



Cables and bus bars current transformer

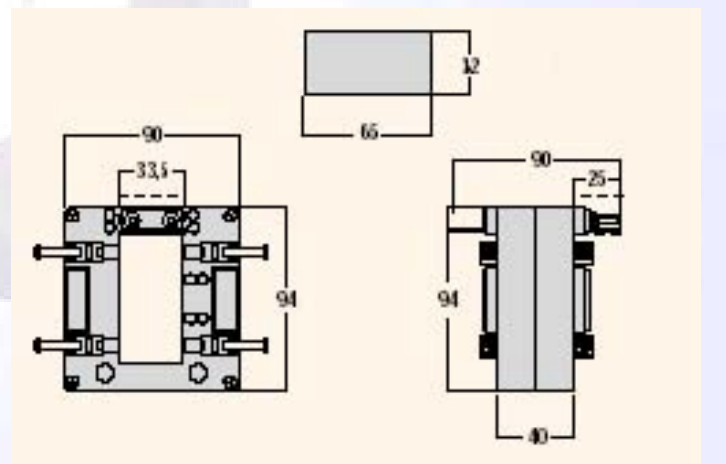
**BARS 40 X 10
CABLES Ø 35 MAXI**

Primary A / Secondary A	Class	VA	Designation
50/5	3	1,5	TAI 400/ 50
60/5	3	2	TAI 400 / 60
75/5	3	3	TAI 400 / 75
100/5	1	1	TAI 400 / 100
125/5	1	2	TAI 400 / 125
150/45	1	3	TAI 400 / 150
200/5	1	3	TAI400 / 200
250/5	1	5	TAI400 / 250
300/	1	8	TAI400 / 300
400/5	1	12	TAI400 / 400
500/5	1	12	TAI400 / 500
600/5	1	15	TAI400 / 600



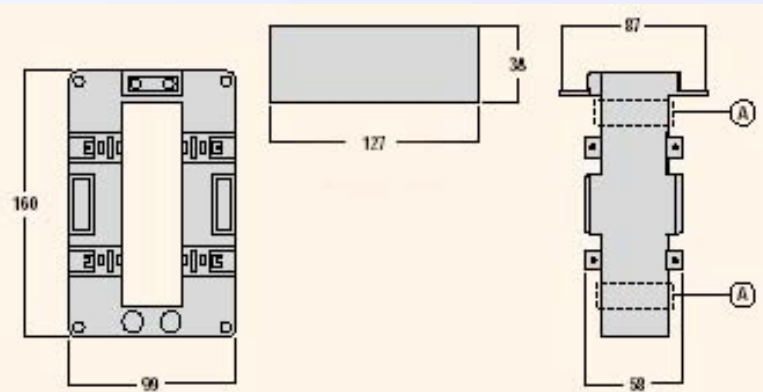
BARS 32 X 65

Primary A / Secondary A	Class	VA	Designation
200/5	1	2	TAS 65 / 200
250/5	1	4	TAS 65 / 250
300/5	1	6	TAS 65 / 300
400/5	1	8	TAS 65 / 400
500/5	1	10	TAS 65 / 500
600/5	1	12	TAS 65 / 600



BARS 38 X 127

Primary Secondary A	Class	VA	Designation
800/5	1	15	TAS 127 / 800
1000/5	1	20	TAS 127 / 1000
1200/5	1	25	TAS 127 / 1200
1500/5	1	30	TAS 127 / 1500
2000/5	1	40	TAS 127 / 2000
2500/5	1	50	TAS 127 / 2500
3000/5	1	60	TAS 127 / 3000
4000/5	1	60	TAS 127 / 4000



Rated Burden for current circuit

Maximun demand ammeter 2,8 VA

Moving-iron ammeter 1,1 VA

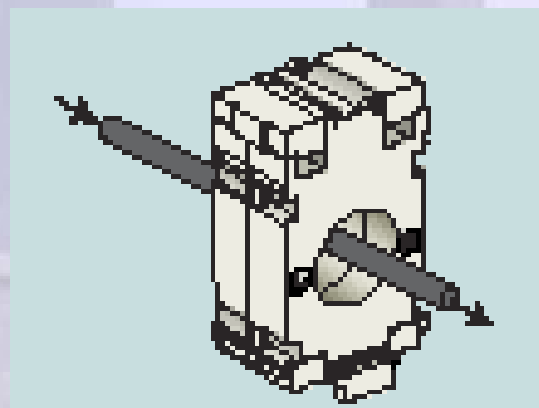
Moving-coil ammeter with retifier < 1 VA

Wattmeter - Varmeter 0,5 VA

Power factor meter 0,5 VA

KWh meters 0,5 VA

Digital ammeter < 1 VA



VA per meter of twin cable at 20° C*

Section in mm2 Cu	Secondary 5A VA	Secondary 1A VA
1	1.00	0,04
1,5	0,68	0,028
2,5	0,41	0,016
4	0,26	0,01
6	0,17	0,007
10	0,098	0,007
16	0,062	0,0025

* For each 10°C of temperature variation, VA absorbed by cable increase by 4%.